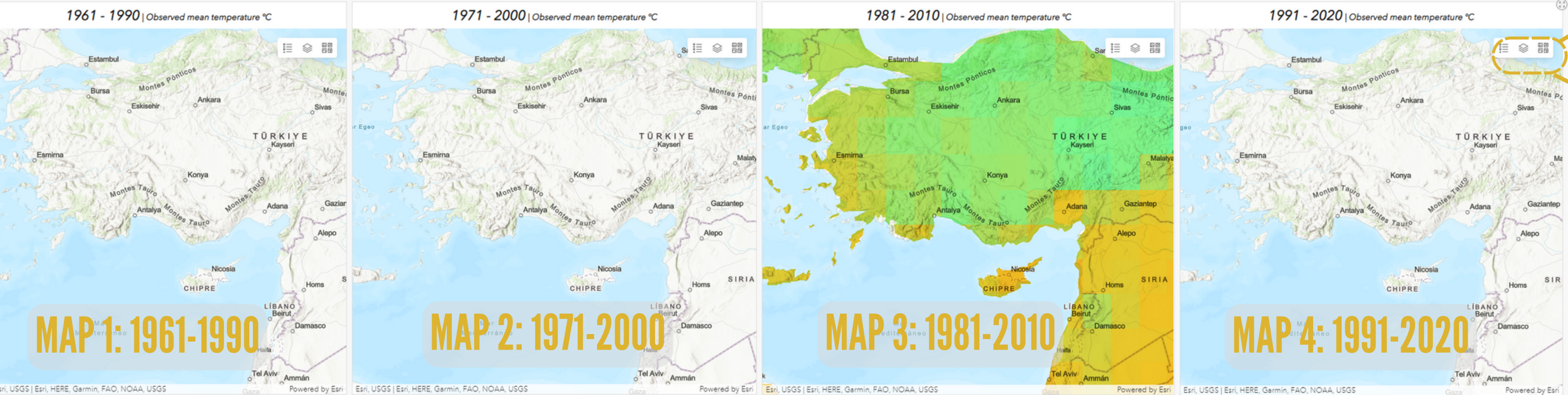



Climate Dashboard User's Guide

How is the climate changing?
Temperature evolution between 1954 and 2100 | Teaching The Future



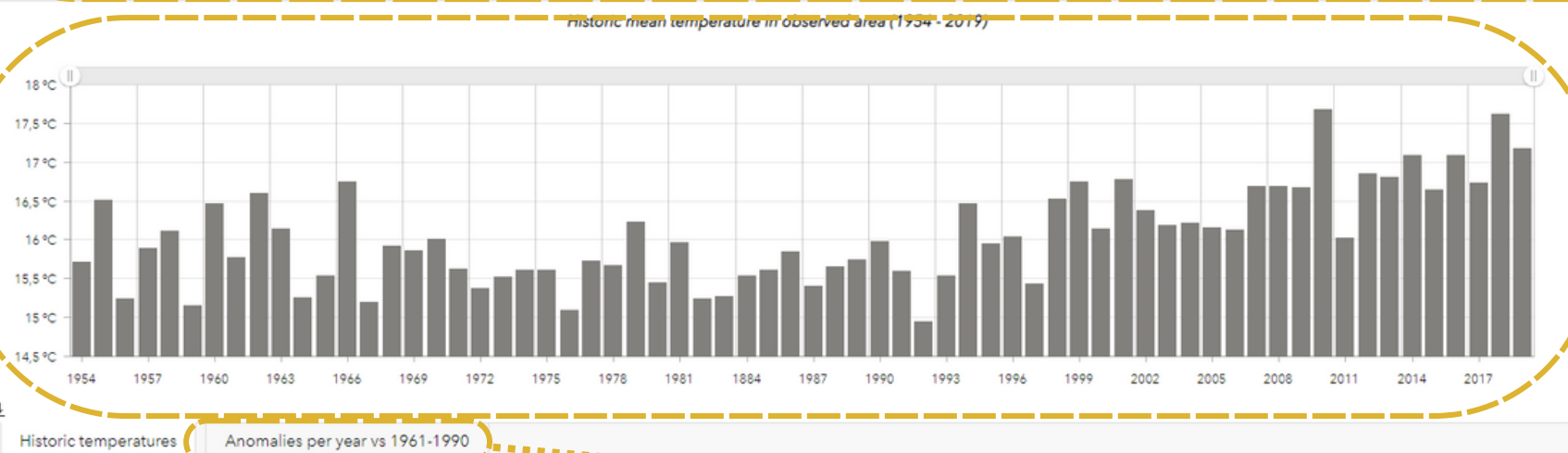
Mean temperature 1961-1990
 **15,7 °C**
in observed area

Mean temperature 1971 - 200
 **15,7 °C**
in observed area

Mean temperature 1981-201
 **16 °C**
in observed area

Mean temperature 1991-202
 **16,4 °C**
in observed area

Mean temperature in each
climate period (Map 1, 2, 3 or 4)
depending selected area of the
maps



Anomalies between climate period 1961-1990 and mean temperature of a year.

For example:

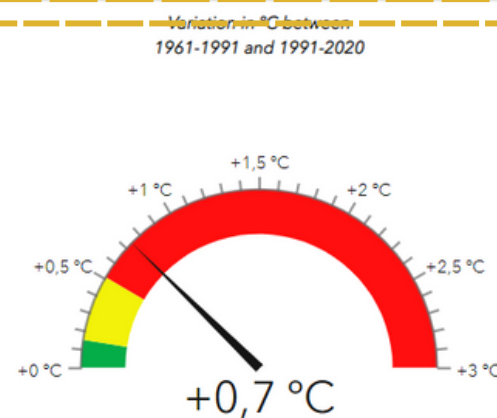
2005 Anomalies (°C) = Temperature (°C) in 2005 - Temperature (°C) in 1961-1990 Period

2005 Anomalies = 25 °C - 22 °C = **+3 °C of anomalie**

Historic temperatures

Anomalies per year vs 1961-1990

Change charts (anomalies/year or mean
temperature evolution per year) in observed area



Celsius degrees variation between
1961-1991 period and 1991-2020
period in the map observed area

Links:

[Historical Temperature Dashboard](#)
[Climate games and simulations](#)
[TTF webpage](#)
[Contact us](#)



Links to another information:
Dashboard of historical climate
Games and Simulations
Support
(...)

For futher assistance, please contact
j.mar@unizar via email (or click "contact us" in Dashboard

Climate Dashboard User's Guide

